



Index



14.0

Product description



14.1

Technical specifications



14.2

Mounting



14.3

Built-in valve



14.4

Standard specification clauses

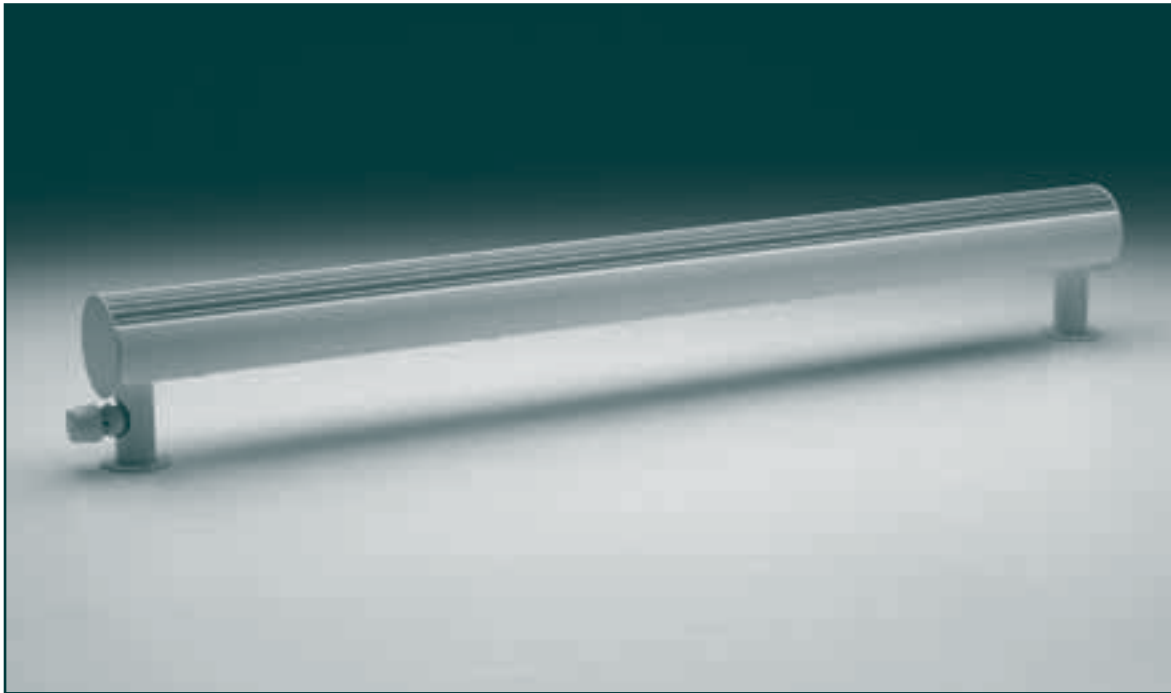


14.7

Maintenance



14.8



Radius with built-in valve

Features

- Ideal in front of glazing due to low height
- Visually appealing from all sides
- Feet conceal pipework



14.0



14.1



14.2



14.3



14.4



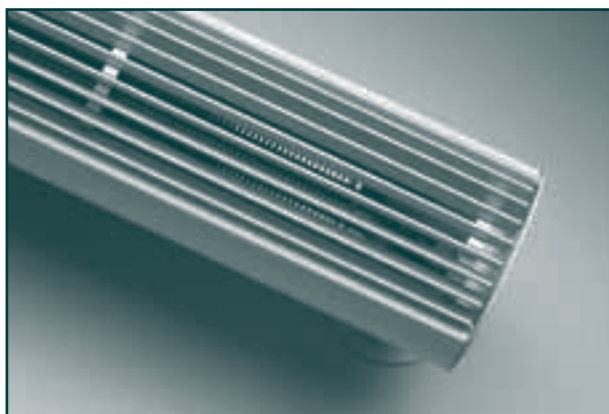
14.7



14.8

Product description

Radius



Radius, plan view

Description

Cylindrical casing with smooth and rebated front and rear, smooth ends and top linear strip grille enclosing a heating element comprising of a finned-tube heat exchanger. Fixed circular feet where one half is a detachable cover, for easy fixing, and circular foot plate.

Material

Casing: 2 mm extruded aluminium profiles to EN 12020-2

Heating element: 15 mm copper tubes

0.15 mm aluminium fins

Top grille: Natural anodised aluminium (silver-grey)

Feet: Extruded aluminium

Foot plate: 4 mm steel plate

Test pressure

13 bar

Max. operating pressure

10 bar in accordance with EN 442

Max. operating temperature

90°C

Surface treatment

Pre-treatment:

- Chemical pre-treatment according to DIN 50939 group E (green chromate).

Paint finish:

- White RAL 9010: Powder PE, gloss approx. 50%.
- Other colours: Powder painted as above or wet painted, gloss approx. 50%
- Surface treatment in accordance with DIN 55900 and EN 442

Output

See output tables page 14.2.1

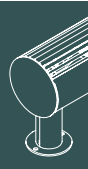


Fig. 14.1.1
Length

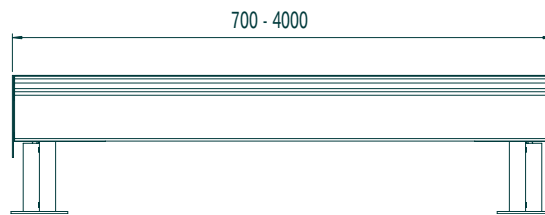
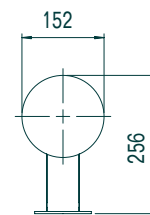


Fig. 14.1.2
Radius, profile



Length	700 - 4000 mm in increments of 100 mm
Height	256 mm
Depth	152 mm
Tappings	Flow and return: 1/2" downward, see page 14.2.1
Mounting	Floor mounted, see page 14.3.1 Coach screws, wall plugs and washers are included Air vent on all models: 1/8" top (under the grille)
Colour	Powder coated in white RAL 9010 Ready-painted in other RAL colours
Packing	Packed securely in environmentally friendly materials.
Optional extras (Variant or individual)	<ul style="list-style-type: none"> • Built-in valve, see pages 14.4.1 - 2

VARIANT



14.0



14.1



14.2



14.3



14.4



14.7



14.8

Technical specifications

Radius

Output

Table 14.2.1

Output		Water content	Weight
W/metre 75/65-20	W/metre 90/70-20	litres/ metre	kg/ metre
357	456	0.8	5.0



Radius with built-in valve

Tapping designation

Fig. 14.2.2
Radius, detachable cover removed

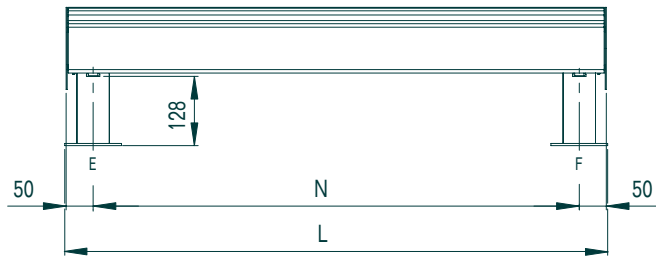
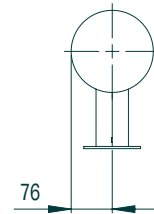


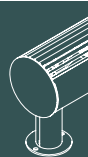
Fig. 14.2.3
Radius, profile



Centre distance N is calculated as: Total length L – 100 mm

Sizes

Flow and return: 1/2" downward in feet
Air vent on all models: 1/8" top (under the grille)



Water resistance

Water resistance can be calculated as:

Example:

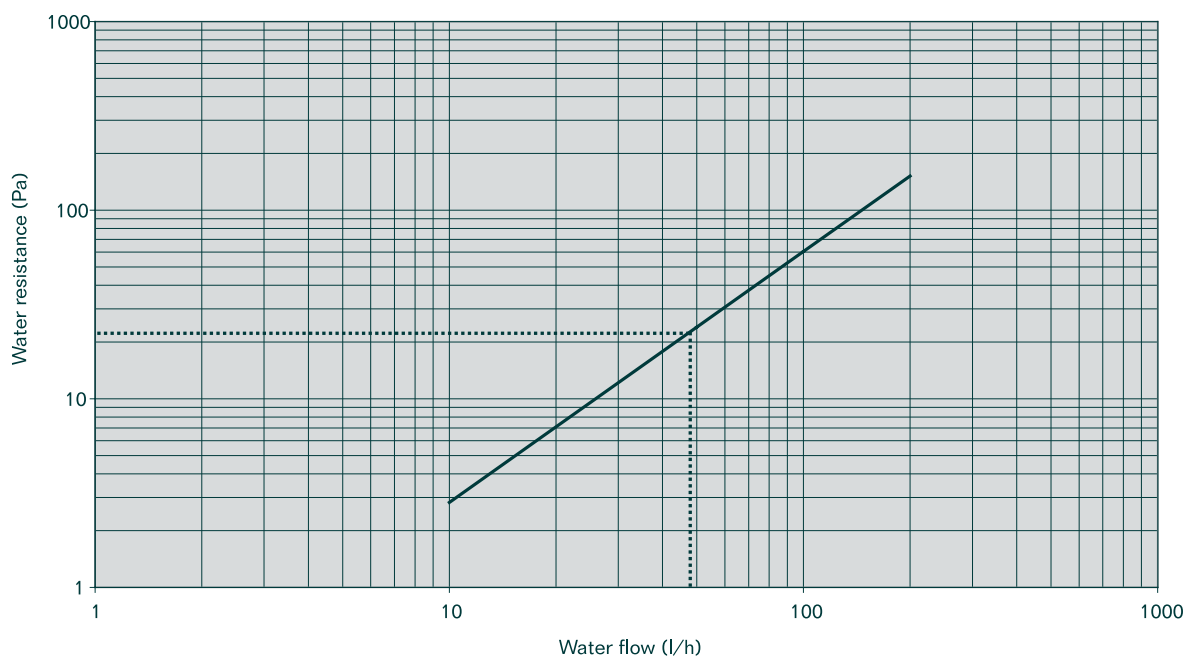
Radiator length: 2500 mm
 Tappings: 1/2" E, F
 Flow temperature t_f : 90°C
 Return temperature t_r : 70°C
 Output at 90/70-20°C: 1140 Watt

Water flow:
$$\frac{\text{Watt}}{(t_f - t_r) \times 1,163} =$$

$$\frac{1140}{20 \times 1,163} \sim 49.01 \text{ l/h}$$

Resistance incl. 1/2" tappings: 22 Pa

Fig. 14.2.4
 Water resistance for Radius



14.0



14.1



14.2



14.3



14.4



14.7



14.8

Mounting

Radius

Mounting

Radius is floor mounted with pipework concealed within the feet, see fig. 14.3.1. After mounting, the detachable cover is clipped onto the foot. The cover can, if necessary, be removed by the use of a screwdriver or similar for maintenance.

Fig. 14.3.1
Radius, front view

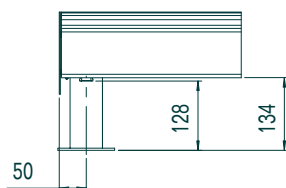
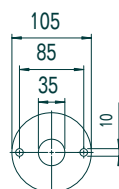


Fig. 14.3.2
Foot plate for Radius, plan view



14.0

14.1

14.2

14.3

14.4

14.7

14.8

Built-in valve



Radius with built-in valve

Description

For use where the thermostatic valve is to be integrated within radiator

Construction

The built-in valve supplied with Radius is a RA-N 1/2" with a Danfoss RAX sensorhead incorporating a Kv limiting device for pre-setting the maximum water flow. The valve body is factory fitted.

Tappings

1/2"

Fig. 14.4.1

Radius with built-in sideways facing valve

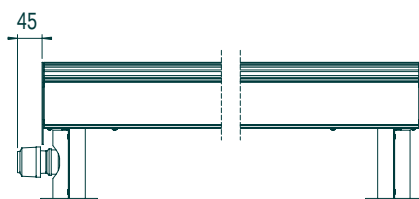
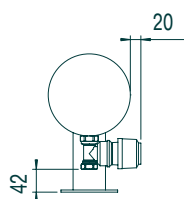


Fig. 14.4.2

Radius with built-in forward facing valve, profile



6 different valve positions can be chosen, see figs. 14.4.3 - 8



14.0



14.1



14.2



14.3



14.4



14.7



14.8



Built-in valve

Radius



14.0



14.1



14.2



14.3



14.4



14.7



14.8

Fig. 14.4.3
Built-in valve, Format 1



Fig. 14.4.4
Built-in valve, Format 2



Fig. 14.4.5
Built-in valve, Format 3

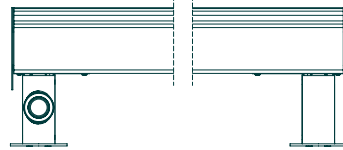


Fig. 14.4.6
Built-in valve, Format 4

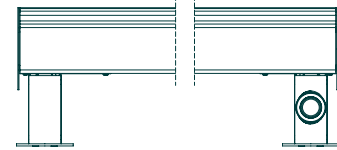
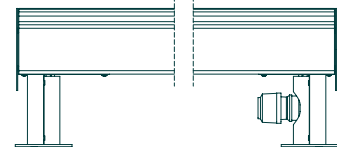


Fig. 14.4.7
Built-in valve, Format 5



Fig. 14.4.8
Built-in valve, Format 6





Radius

“Hudevad model Radius has cylindrical casing with smooth and rebated front and rear, smooth ends and top linear strip grille enclosing a heating element comprising of a finned-tube heat exchanger. Cylindrical, fixed feet incorporating a circular foot plate.

Primed and ready-painted with oven dried powder coat or wet coat.

Test and operating pressure 13, 10 bar respectively.”

Built-in valve (page 14.4.1)

“Valve integrated into foot without visible pipework and with hole for sensor head”

Order guide

When ordering, please state length in mm and position of flow and return.

When ordering built-in valve please state Format number, see figs. 14.4.3 - 8



14.0



14.1



14.2



14.3



14.4



14.7



14.8

Maintenance

Radius

Maintenance

Repair of powder or wet coated radiators

Water based acrylic paint obtained from a decorating wholesaler can be used

Recoating of powder or wet coated radiators

After cleaning, powder or wet coated radiators can be recoated with the following:

Powder coat: PE powder

Wet coat: Synthetic, non yellowing coat. Water based or similar acrylic paint.

Hardening: 180°C curing temperature for 10 min.

Venting

Venting of radiators is only necessary if the heating system has been drained or if the radiators for some reason are noisy from air in the system. The flow valve must be open when venting. The air vent should be opened cautiously, while a cloth is held in front of it to prevent splashing. When air is vented and only a water jet is emitted, close the vent.

Cleaning

Light household cleaning materials can be used for painted surfaces.

Abrasive materials such as scouring powder should not be used.

The top of the radiator can be cleaned with a soft brush, if necessary, together with a vacuum cleaner.

Attention: When venting or cleaning please be cautious about aluminium fins since they are very thin and fragile. If one or more fins get unintentionally bent on the edges, bend them back to their original position to ensure proper air streaming through the heating element.



14.0



14.1



14.2



14.3



14.4



14.7



14.8